

B2



B2

SPECIFICATIONS.



Prix demandé
EUR 79 000 000



Chantier
2008 (refitted 2022), Abeking & Rasmussen, Germany



Longueur
85,6m



Largeur
12,4m



Tirant d'eau
3,5m



Tonnage brut
2 150



Vitesse de croisière
13,5 knots



Vitesse maximale
16,5 knots



Autonomie
6 690 nm



Pavillon
Cayman Islands



Position
West Mediterranean



Classe
**Lloyd's Register (LR) Lloyds Register ⌘ 100A1
SSC Yacht (P) Mono G6 ⌘ LMC UMS**



Designer extérieur
Reymond Langton Design



Designer d'intérieur
Reymond Langton/Brian Callahan



Construction
Hull - Steel, Superstructure - Aluminium, Deck - Teak



Équipage
26



Invités
26



Cabines
12 (12 × double, 2 × additional berths)



Moteurs
2 × 2 000hp Caterpillar



Propulsion
Twin screw diesel yacht

Note

Not available for sale to US residents while in US waters.

[Voir le yacht sur le site](#)

[Regarder la vidéo du yacht](#)





B2



B2



B2



B2







B2



BURGESS

Discover the difference.
burgessyachts.com



B2



At anchor



BURGESS

Discover the difference.
burgessyachts.com



B2

APERÇU.

The 85.6m (280.8ft) B2 was delivered in 2009 by legendary German shipyard Abeking & Rasmussen with exterior design by Reymond Langton Design and brand-new interiors by Winch Design, fitted in 2022 at a cost of EUR 4,000,000. She has immaculate pedigree.

Delivered as one of A&R's highly successful 78m Series, she received a 7m (23ft) extension aft to accommodate a main deck aft pool and a feature beach club during an extensive 2019 refit.

The truly remarkable aspect of this yacht is its adaptability, its ability to accommodate so many different uses. As a pure multi-generational family yacht, she accommodates up to 26 guests and staff in 12 cabins with an elevator serving all guest decks.

The upper deck owner's suite has panoramic views and there is a VIP suite on the same deck. Other guest accommodation across main and lower decks can be retained for family use or, should you choose to operate her commercially (she is charter compliant), converted into meeting areas, media rooms, gym, library, cinema, wellness centre or any other facility.

Her extensive deck space includes a large sun deck with a raised jacuzzi surrounded by sunpads forward offering both privacy and excellent views. Two deck pods contain a shower to port and the elevator to starboard. Aft is a large versatile space with a bar and buffet, providing options for sun lounging, exercise or entertainment with optional shade from awnings and inside the superstructure is a massage room and day head.

There is open-air dining and a sun lounge area on the bridge deck aft, again with bar and buffet and abundant deck space presenting a range of activity options. The upper deck aft also has a bar and buffet, continuing the theme of versatility, with a sun lounge aft.

Alongside several lounge seating areas around the space and a bar, the key feature on the vast main deck aft is a huge glass bottomed infinity pool that, together with the outdoor cinema, creates a hub for family activities during the day and night.

Steps lead down to the swim platform and the spectacular lower deck beach club, lined with teak, shimmering with light from the pool above and open on three sides offering an immediate connection to the sea. Tenders and toys are stowed in a full-beam garage just forward of the beach club, with shell doors either side for launch and recovery.

Interior social spaces include the saloon on the main deck, a circular dining room with 180-degree views on the upper deck aft in addition to the open-air dining on the bridge deck aft. A sky lounge on the bridge deck has excellent views and provides a comfortable sanctuary for relaxation with family and friends.

Twin 2,000hp Caterpillar diesel engines give her a top speed of 16.5 knots, a cruising speed of 15 knots and a transatlantic range of 6,690nm at 13.5 knots.

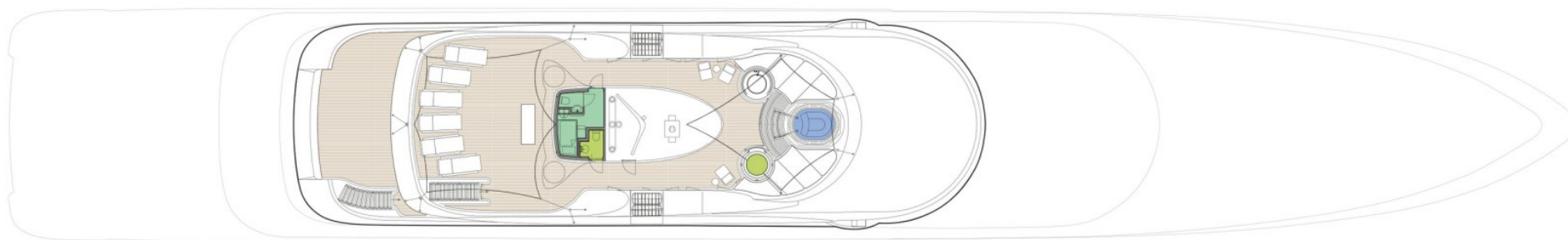
Principales caractéristiques



Annexes

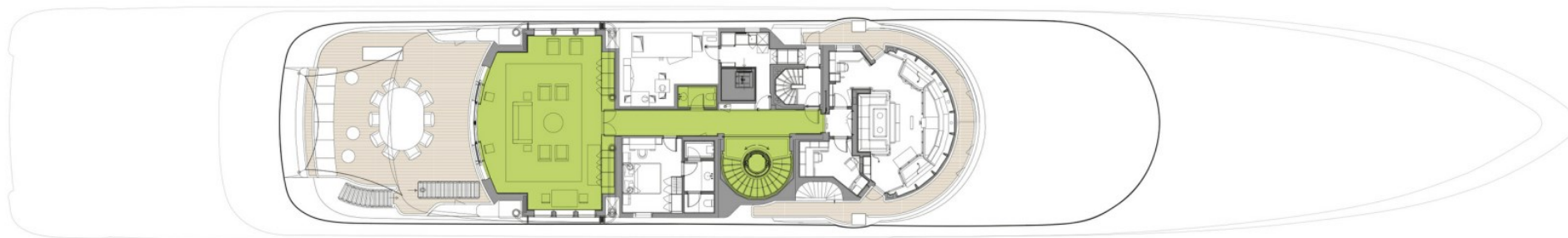
2 x custom 2008 YachtWerft Mayer (20.25ft) tenders, 1 x Pirelli Pzero T75 rib, 1 x rescue Zodiac tender

SUN DECK



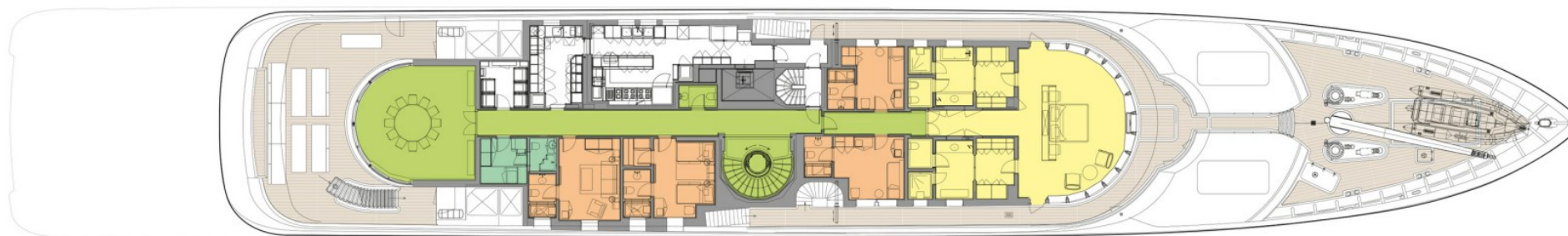
 GUEST AREAS  OWNER'S SUITE  VIP SUITE  GUEST CABINS  STAFF CABINS  MASSAGE SUITE  JACUZZI  POOL

BRIDGE DECK



 GUEST AREAS  OWNER'S SUITE  VIP SUITE  GUEST CABINS  STAFF CABINS  MASSAGE SUITE  JACUZZI  POOL

UPPER DECK



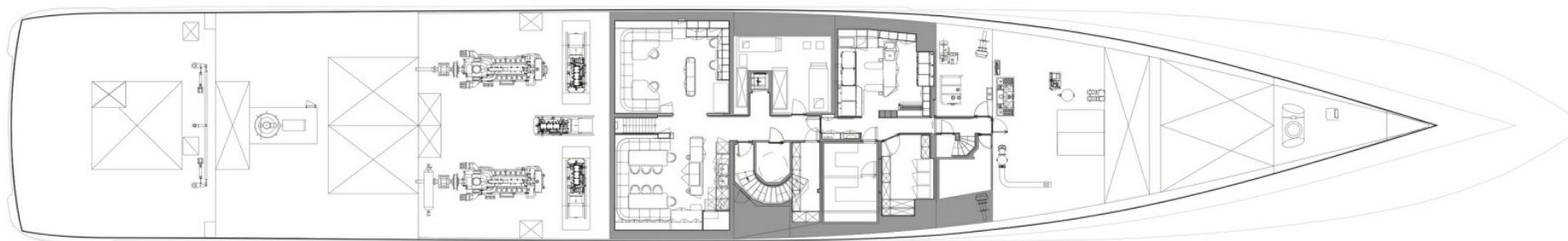
 GUEST AREAS  OWNER'S SUITE  VIP SUITE  GUEST CABINS  STAFF CABINS  MASSAGE SUITE  JACUZZI  POOL

MAIN DECK



 GUEST AREAS  OWNER'S SUITE  VIP SUITE  GUEST CABINS  STAFF CABINS  MASSAGE SUITE  JACUZZI  POOL

TANK DECK



 GUEST AREAS  OWNER'S SUITE  VIP SUITE  GUEST CABINS  STAFF CABINS  MASSAGE SUITE  JACUZZI  POOL

BURGESS

WORLD CLASS. WORLD WIDE.

London +44 20 7766 4300	Monaco +377 97 97 81 21	New York +1 212 223 0410	Miami +1 305 672 0150	Singapore +65 9665 8990	Beverly Hills +1 310 424 5112	Palma +34 971 495 413	Athens +30 210 967 1661
Dubai +971 4 425 5874	Phuket +66 7623 9739	Hong Kong +852 6496 2094	Tokyo +81 46 738 8612	Sydney +61 499 945 557	Mumbai +91 98211 67253	Brazil 012345678901	

La publicité de ce(s) navire(s) dans des publications imprimées, sur Internet ou sur tout autre support n'est pas autorisée sans l'autorisation écrite préalable de Burgess.
Toutes les informations sont données de bonne foi et sont considérées comme exactes, mais elles ne peuvent être garanties.

Dernière mise à jour : 21 mai 2025