

HANSE EXPLORER



HANSE EXPLORER

OVERVIEW.

HANSE EXPLORER is one of few yachts on the charter market that can be considered a true expedition yacht.

Purpose built in 2006 with German precision, HANSE EXPLORER's steel hull has the highest commercial Ice Class rating (Finnish Ice Class A1/Germanischer Lloyd Ice Class E3) and her powerful engine allows her to break through dense sea ice with ease. Expeditions in recent years have taken her south of the Antarctic Circle, into the High Arctic and to many other exotic destinations in between. With state of the art navigation equipment, an 8,000nm cruising range, the capacity to produce 20 tons of fresh water on board every day and an extraordinary level of seaworthiness, HANSE EXPLORER is entirely self sufficient for long range exploration.

The interior offers light, functional and relaxed furnishings that feature beautiful woodwork and an intelligent layout for maximising space. The master cabin is situated on the upper deck, consisting of a double en suite and a large adjoining private lounge or study. The remaining six guest cabins on the main deck are practically identical, apart from subtle differences in colour scheme. A total of 12 guests are accommodated.

The experienced crew are outstanding and love taking guests for an adventure of a lifetime! For this, they have both the expertise and the knowledge.

Key features

Spa facilities: Finnish sauna

Flexible cabin configurations

HANSE EXPLORER

Cruising



Aft deck dining area



Main deck lounge



Main deck bar



BURGESS

Discover the difference.
burgessyachts.com



HANSE EXPLORER

Main deck dining area



Upper deck master convertible double/twin cabin



Master bathroom en suite



Upper deck master lounge and office



HANSE EXPLORER

Upper deck master lounge



Main deck convertible double/twin cabin



Main deck convertible double/twin cabin



Finnish sauna



HANSE EXPLORER

Stern view



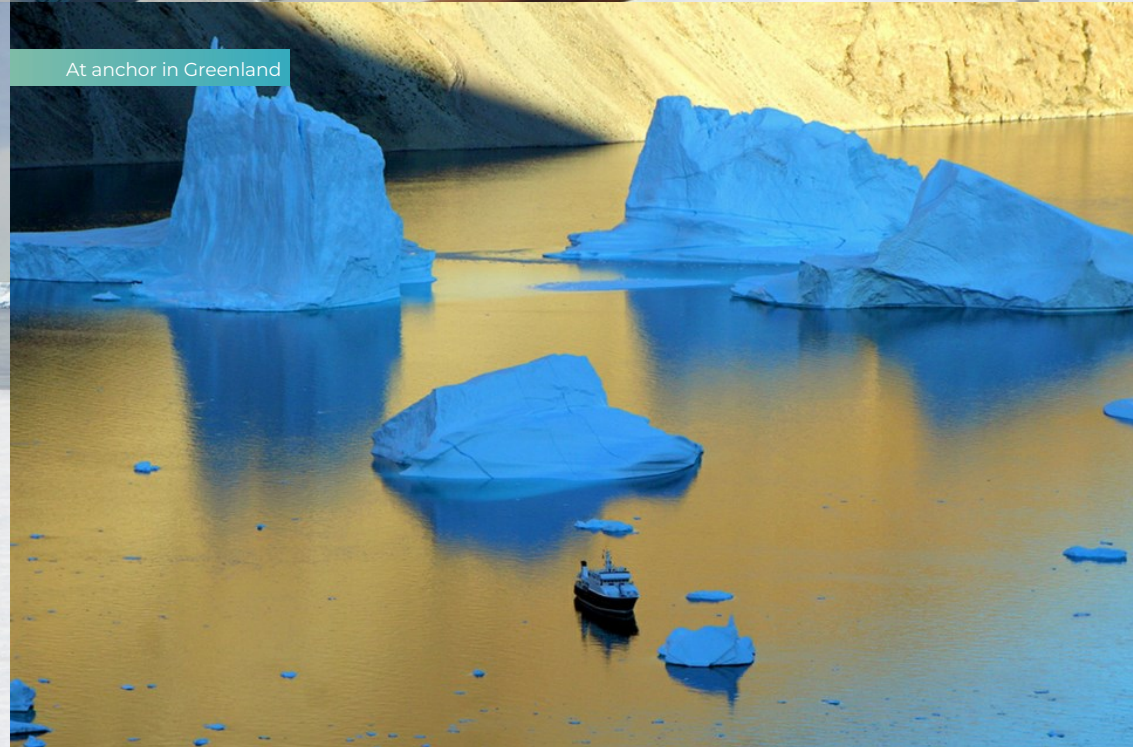
Bow



At anchor



At anchor in Greenland



BURGESS

Discover the difference.
burgessyachts.com



HANSE EXPLORER

SPECIFICATION.



Length
47.8m (156.7ft)



Built
2006, Fassmer Werft



Interior designer
Gisela Miescke



Beam
10.4m (34.1ft)



Draft
4.3m (14.1ft)



Gross tonnage
885



Cruising speed
10 knots



Maximum speed
12 knots



Fuel consumption at cruising speed
200 litres per hour



Engines
1 x 1,823hp MAK



Guests
12



No. of guest cabins
7 (1 x double, 6 x double/twin)



Crew
14

[View yacht on website](#)



HANSE EXPLORER

TENDERS & TOYS



2 × Tenders



3 × Kayaks



Scuba diving equipment

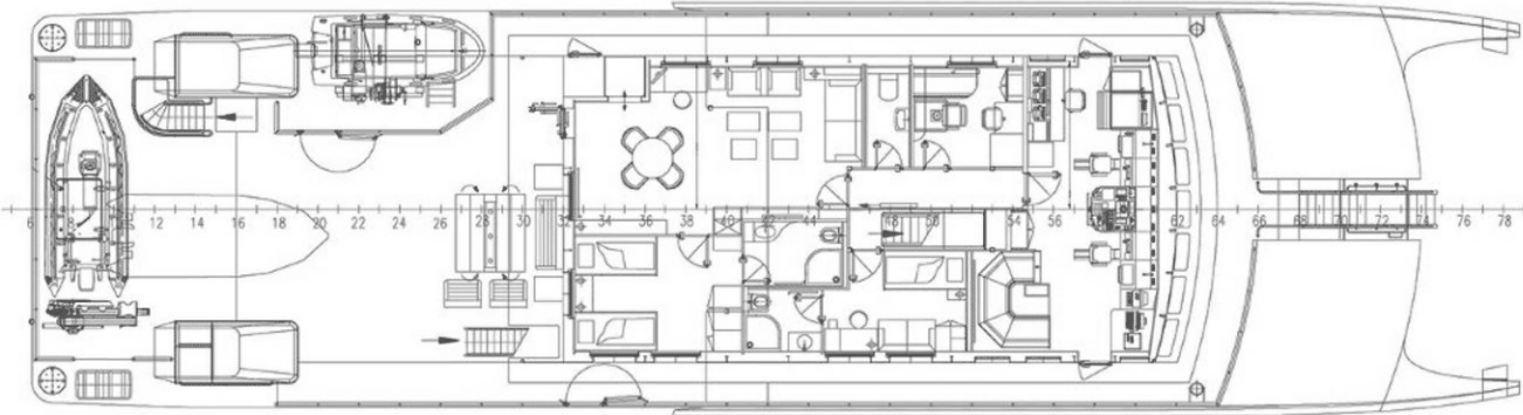


Fishing gear

2 x MK IV Zodiac tenders with Yamaha 4-stroke engines, 3 x inflatable kayaks (2 man), dive compressor, diving equipment, fishing gear

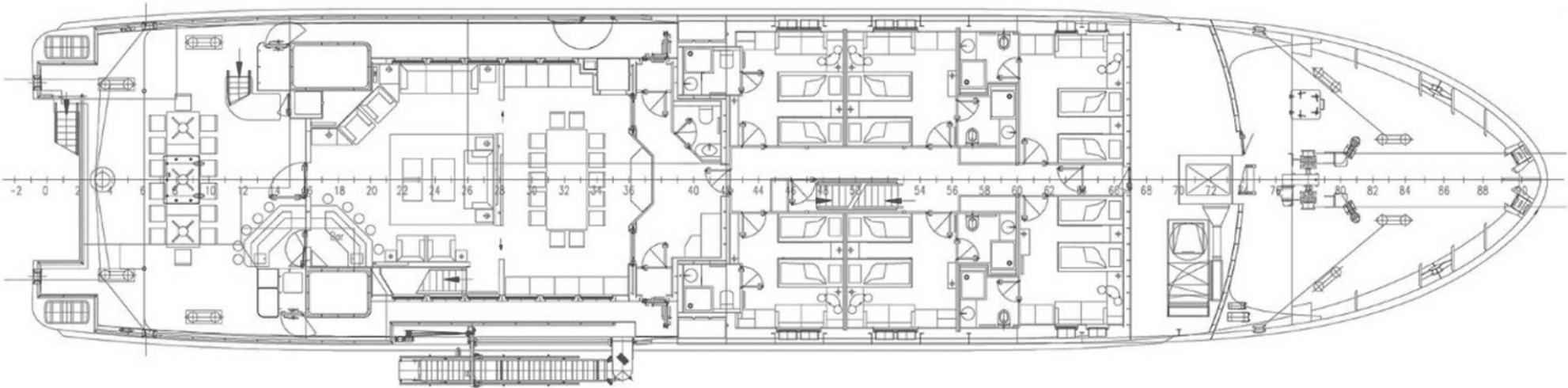
HANSE EXPLORER

Upper deck



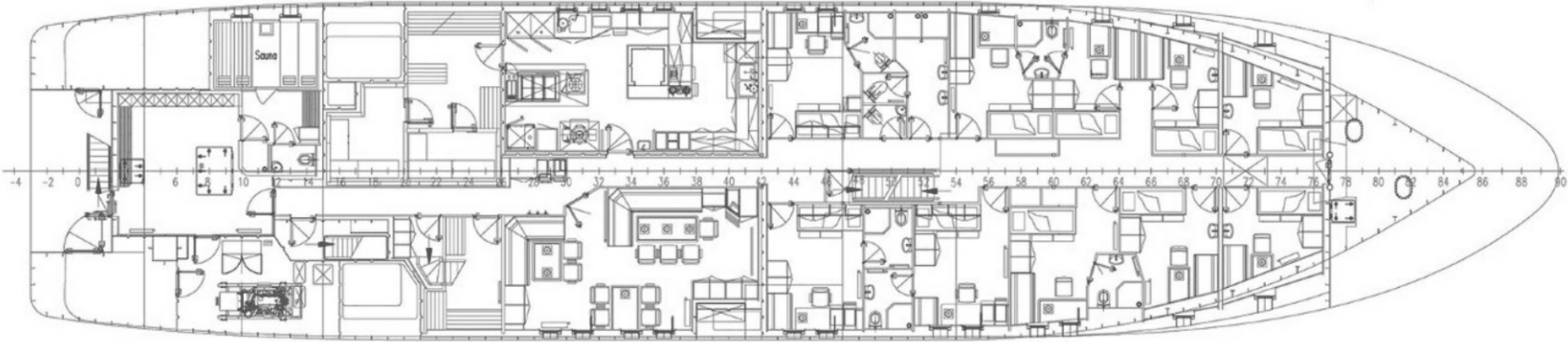
HANSE EXPLORER

Main deck



HANSE EXPLORER

Lower deck



BURGESS

WORLD CLASS. WORLD WIDE.

London +44 20 7766 4300	Monaco +377 97 97 81 21	New York +1 212 223 0410	Miami +1 305 672 0150	Singapore +65 9665 8990	Beverly Hills +1 310 424 5112	Palma +34 971 495 413	Athens +30 210 967 1661
Dubai +971 4 425 5874	Phuket +66 7623 9739	Hong Kong +852 6496 2094	Tokyo +81 46 738 8612	Sydney +61 499 945 557	Mumbai +91 98211 67253	Brazil 012345678901	

Advertising of these vessel(s) in printed publications, on the internet or in any other medium is not permitted without prior written permission from Burgess. All particulars are given in good faith and are believed correct but they cannot be guaranteed.

Last updated: 07 April 2025